



Welcome to the
**Tenth Anniversary
Celebration!**



Mission

The Greater Philadelphia Business Coalition on Health seeks to increase the value of health benefit spending for the region's employers. We do this by improving workforce and community health, increasing healthcare quality and safety, and reducing healthcare costs.

The Coalition represents employer interests in working with health plans, healthcare providers, benefits consultants, suppliers and other system stakeholders to address population health priorities and to ensure that when healthcare is needed it is accessible, affordable, equitable, high-quality, and safe.

GPBCH represents 750,000 lives locally and 1.5 million lives nationally, serving employers in southeastern Pennsylvania, southern New Jersey and Delaware.



GPBCH Staff



Neil Goldfarb
President and CEO



Jill Hutt
Vice President of Member Services



Eric Croft
Director of Operations



Dr. Ray Fabius
Consulting Medical Director



Marty Romney
Project Director



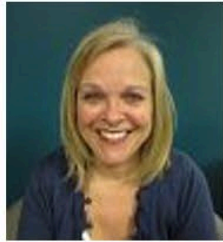
GPBCH Board of Directors



Marsha Greene-Jones
Deputy HR Director
City of Philadelphia
BOARD CHAIR



Mark Angelo, MD
President
Delaware Valley ACO



Pamela Braun
Vice President,
Clinical
Improvement,
Health Care
Improvement
Foundation



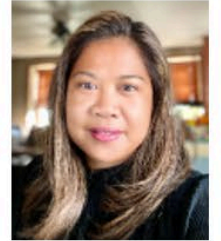
Sharon Castillo
Director, Plan
Administration,
Board of Pensions
of the Presbyterian
Church (U.S.A.)



Maureen Clancy
Senior Director,
Total Rewards,
Comcast
NBCUniversal



Michelle DeNault
Senior Benefits
Administrator
Wawa



Aileen Espiritu
Benefits Manager
Essity North America



Lorna Haley
Occupational Health
Nurse
SEPTA



Jim Miller
Vice President
Sales & Service
National Accounts
Aetna



James Rhodes
Deputy County
Administrator
Camden County



Peggy Schubert
Area Vice President
Gallagher



James Startare
Associate Vice President
Benefits
Aramark



Pam Teufel
SVP, Chief Human
Resources Officer
Main Line Health



Marnie Vaughan
Vice President,
Human Resources
Inframark



Thank You!

Thank you to our employer and affiliate members, sponsors, and collaborative partners for supporting our mission to advance healthcare value.

Here's to another 10 years of making a difference!



Thank You Program Book Ad Sponsors



ChristianaCare™



Day & Zimmermann
We do what we say.



EMPYREAN



Gallagher

HealthAdvocateSM HealthEquity[®]



HELP for
CAREGIVERS

www.Help4CGs.com

Humana



Thank You Program Book Ad Sponsors





Thank You Silent Auction Contributors

Aetna
Castlight Health
DoubleTree by Hilton
HealthEquity
Independence Blue Cross
MedWorks Consulting LLC
School District of Philadelphia
Tanika Smith

GPBCH Minority College Student Summer Internship

We are excited to launch an internship with GPBCH for minority college students in our region starting in June 2023. Proceeds from the Silent Auction will assist in funding this summer internship program.



Thank You GPBCH Premier Employer Members



THE BOARD OF PENSIONS
OF THE PRESBYTERIAN CHURCH (U.S.A.)



COMCAST



MERCK
INVENTING FOR LIFE



Thank You GPBCH Employer Members





Thank You GPBCH Affiliate Members



Insurance | Risk Management | Consulting

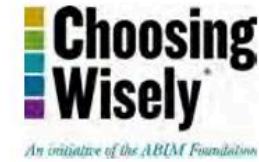




Thank You GPBCH Collaborative Partners

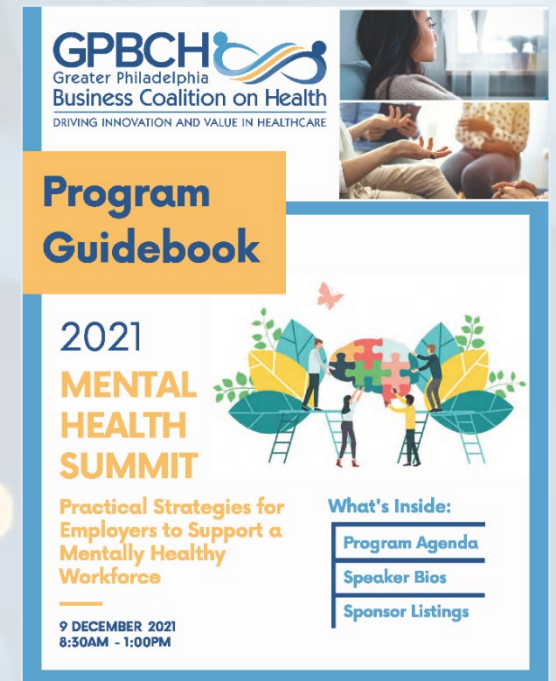


HEALTH PROMOTION COUNCIL
a PHMC affiliate



Education Topic Examples:

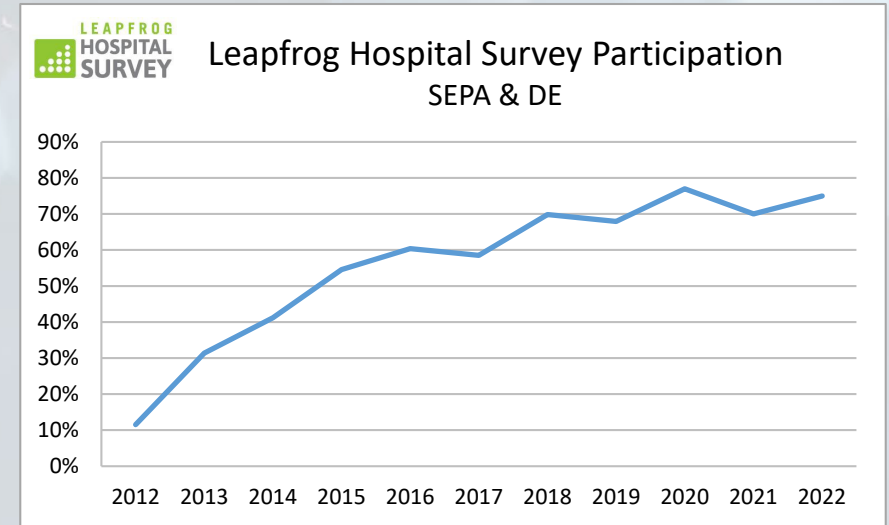
- Employers Only Forums
- Quality, Safety & Price Transparency
- Obesity and Diabetes
- Behavioral Health
- Health Equity
- Pharmacy Benefits
- Advancing Cultures of Health
- COVID-19
- Primary Care
- Advanced Surgical Value
- Oncology
- Musculoskeletal Issues
- Migraine
- Dental Health
- Multiple Sclerosis
- Smoking Cessation
- High-Risk Pregnancy
- Stroke Prevention



“The Wawa Wellbeing and Benefits team appreciate the high caliber and content of the GPBCH educational programs that support professional development and provide information on a variety of topics for critical decision making. With employees in several states, it is important for us to participate with a coalition that can offer resources not only for this region but also for the other regions where we do business.” - Michelle DeNault, Senior Wellbeing and Benefits Administrator, Wawa

Key Accomplishments: Transparency

- Leapfrog Hospital Survey participation in SEPA/DE leaped from 5% to 75%.
- GPBCH employer members, Comcast NBCUniversal, State of Delaware, Teamsters, and Wawa, participate in Leapfrog National Panel of Employer Benefit Innovators.
- GPBCH members awarded Leapfrog Bruce Bradley Fellowship.
Jill Hutt, GPBCH, Marnie Vaughan, Inframark, Aaron Schrader, State of Delaware, Sharon Castillo, Board of Pensions of the Presbyterian Church (U.S.A.), Tanika Smith, Teamsters Health & Welfare Fund of Philadelphia & Vicinity
- Introduced Inaugural GPBCH Top Hospital Awards in 2021.
- Issued Transparency Reports for hospital and physician quality and pricing.





“Being able to identify high quality, safe health care is key so we can provide our members the information they need to make informed decisions for the best outcomes.” - Tanika Smith, Director of Communications, Teamsters Health & Welfare Fund of Philadelphia & Vicinity



Beyond Hospital Transparency
GETTING TO FAIR PRICE



Tools for employers to evaluate hospital quality, safety and cost

GPBCH Members Have Engaged in:

- CDC Foundation Cultures of Health Initiative
- Health Equity Collaborative
- Diabetes Prevention Pilot Programs
- GPBCH Healthy Employer Recognition
- Healthcare Innovation Awards
- Community Well-being Events

“The City of Philadelphia has been an active participant and supporter of the Coalition over the last ten years. GPBCH is a trusted source for information, tools and resources to help employers identify innovative approaches to manage and advance workforce and community health. The Return on Investment far exceeds the membership dues.”

- Marsha Greene-Jones, GPBCH Board Chair and Deputy Human Resources Director, City of Philadelphia & GPBCH Board Chair



PREVENTING DIABETES IN THE WORKFORCE

Call To Action for Benefits and Financial Advisors to Improve Workforce Health And Reduce Costs



Save the Date!



2023 GPBCH Annual Conference

May 24th, 2023
7:30am - 4:00pm

Philadelphia
DoubleTree Hotel





Connect with GPBCH on Social Media!

Follow us @GPBCH for updates on:

- Upcoming Programs
- New Resources
- Coalition News
- And More!

