



Kevin Fosnocht, MD, FACP
May 2023



Proprietary & Confidential – Do Not Distribute

Tandigm-at-a-Glance

Independence 

 UNIVERSITY OF PENNSYLVANIA HEALTH SYSTEM

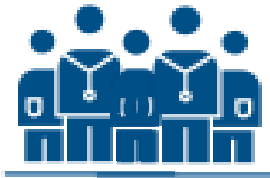
2015

 tandigm health

2023

People

Mission-driven community of **250 employees**, with **30%** of workforce who are **clinicians**, along with team of **experts across the PH and VBC continuum**.



Network

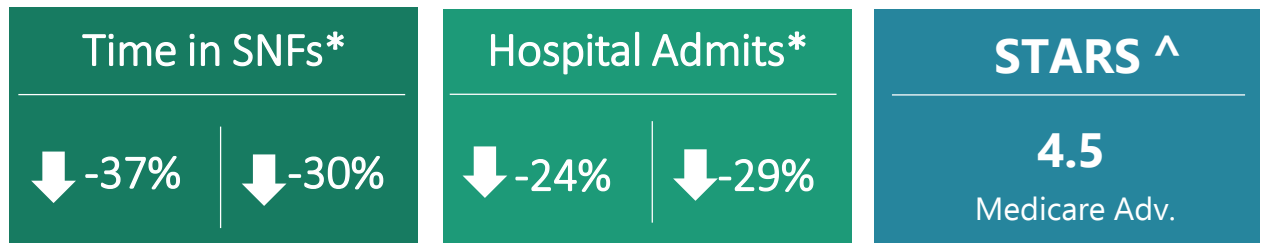
More than **650 primary care** and **700 specialty care physicians** serving over **135K patients** across nearly **400 locations** throughout 5 Philadelphia counties and expanding.



Payors



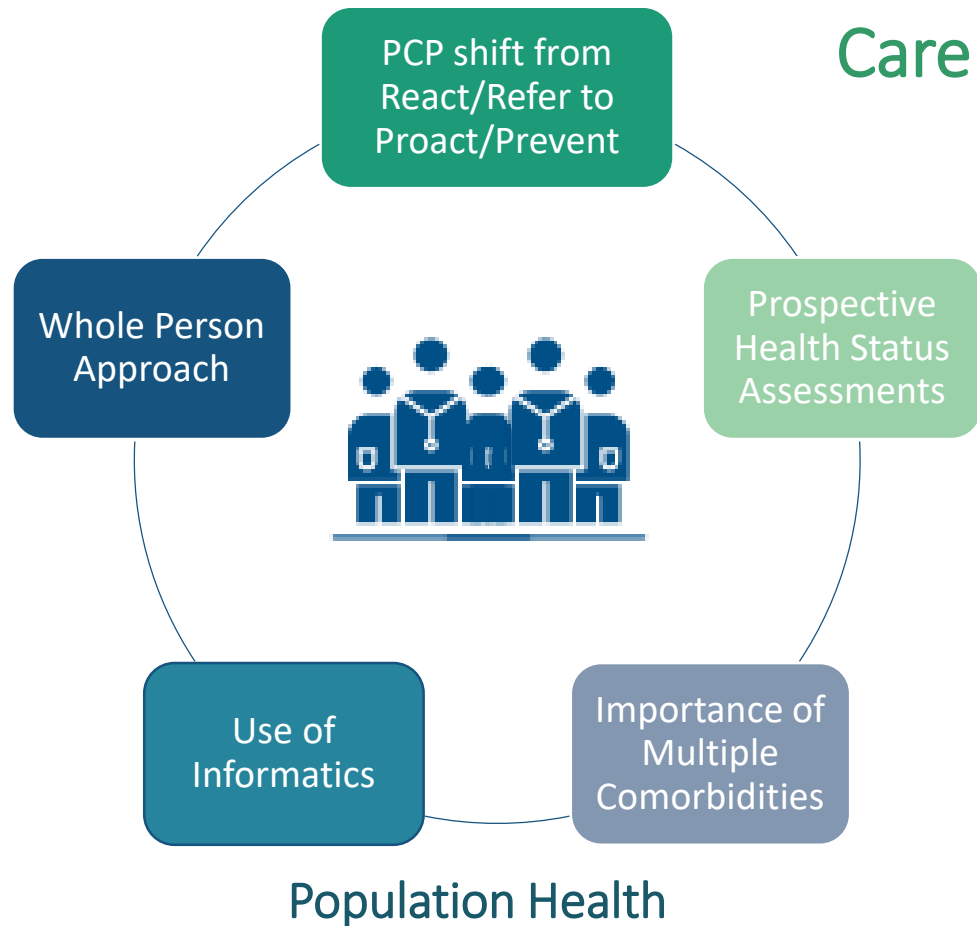
Impact Since 2015



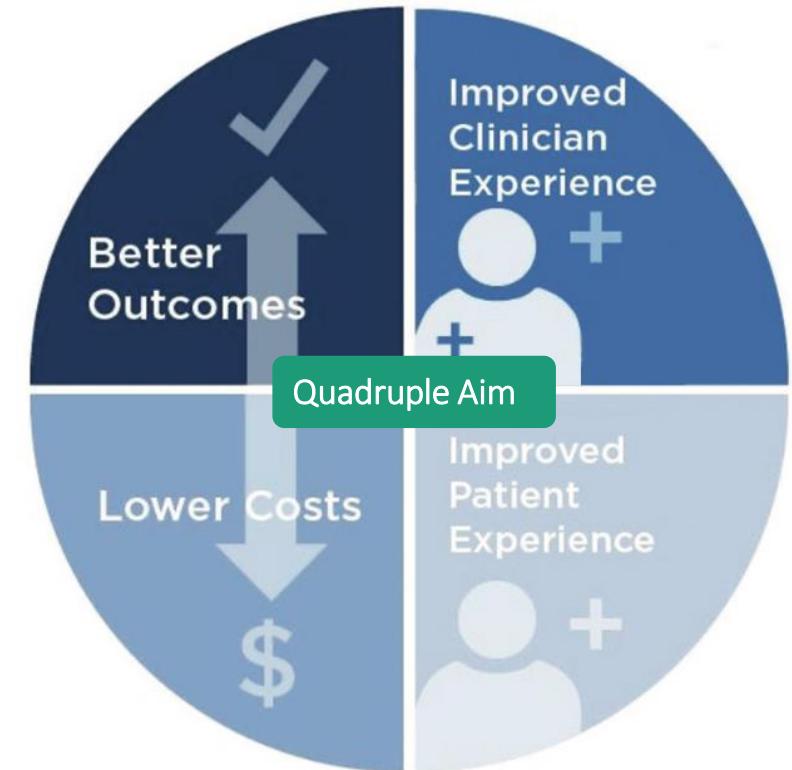
*(L)Medicare; (R)Commercial

^Based on preliminary 2022 reporting data

A Population Health Management Company



Care Delivery Model



Value-Based Care

A model of **care** driven by a **clinical** strategy

A model of **funding** driven by a **financial** strategy