



ASCO PATIENT-CENTERED CANCER CARE CERTIFICATION

FEATURING ASCO AND COA ONCOLOGY MEDICAL HOME

Stephen S. Grubbs, MD, FASCO

Greater Philadelphia Business Coalition on Health

April 4, 2023

Agenda

- Panel Introductions
- Oncology Medical Home: Background and Standards
- ASCO Patient-Centered Cancer Care Certification (APC4)
- Certified Cancer Center Experience
 - Andrew E. Chapman DO, FACP, Director, Sidney Kimmel Cancer Center
Thomas Jefferson University/Jefferson Health
- Discussion

Panel Faculty

- Ronda Bowman, MHA, RN, OCN
 - Senior Director, Care Delivery, American Society of Clinical Oncology
- Andrew Chapman, DO, FACP
 - Director Sidney Kimmel Cancer Center, EVP Oncology Services, Jefferson Health
- Bo Gamble, BS
 - Director of Quality and Value, Community Oncology Alliance

Collaboration between ASCO and COA

Leaders in Cancer Care Quality and Value Efforts

Community Oncology Alliance (COA)

- **Mission:** Ensuring patients receive quality, affordable, and accessible cancer care in their own communities
- Non-profit organization dedicated to advocating for community oncology patients and practices
- Built a national grassroots network of community oncology practices to advocate for public policies that benefit patients
- Development of core Oncology Medical Home standards

American Society of Clinical Oncology (ASCO)

- **Mission:** conquering cancer through research, education, and promotion of the highest quality, equitable patient care
- World's leading professional organization for physicians and oncology professionals caring for people with cancer
- Membership: over 45,000 oncology professionals
- 18 standing volunteer committees to advance ASCO programs, resources, and services
- Successful certification experience with QOPI Certification Program



ASCO[®]

AMERICAN SOCIETY OF CLINICAL ONCOLOGY
ASSOCIATION FOR CLINICAL ONCOLOGY
KNOWLEDGE CONQUERS CANCER



Oncology Medical Home Background and ASCO/COA Standards

Patient Centered Medical Home Definition

Agency for Healthcare Research and Quality (AHRQ)

- **Comprehensive Care**
 - Accountable for meeting patient's physical and mental health needs
 - Requires team-based care
- **Patient Centered**
 - Relationship-based care with emphasis on the person and family
- **Coordinated Care**
 - Across all elements of the broader health system
- **Accessible Care**
 - Shorter time for urgent needs, 24/7 access, alternative methods of communication
- **Quality and Safety**
 - Performance measurement and improvement
 - Evidence based care
 - Measuring and responding to patient experience and satisfaction

Oncology Medical Home Standards and Patient-Centered Cancer Care Certification

Applies care knowledge to support patient preferences, needs, and values

- **Applies learnings and findings from previous initiatives** to form a meaningful program that identifies and promotes quality cancer care for all that support that journey.

Establishes high quality cancer care

- A care delivery system that proves **high quality, evidence-based** cancer care with **measurement**.

Reinforces continual improvement

- **Reinforces** on-going quality cancer care with **ongoing assessment and continual improvement**.

Standardization

- **Standard and consistent platform** for quality cancer care for national, regional and local payers that are **reformist in payment methodology**.

Clinical and Financial

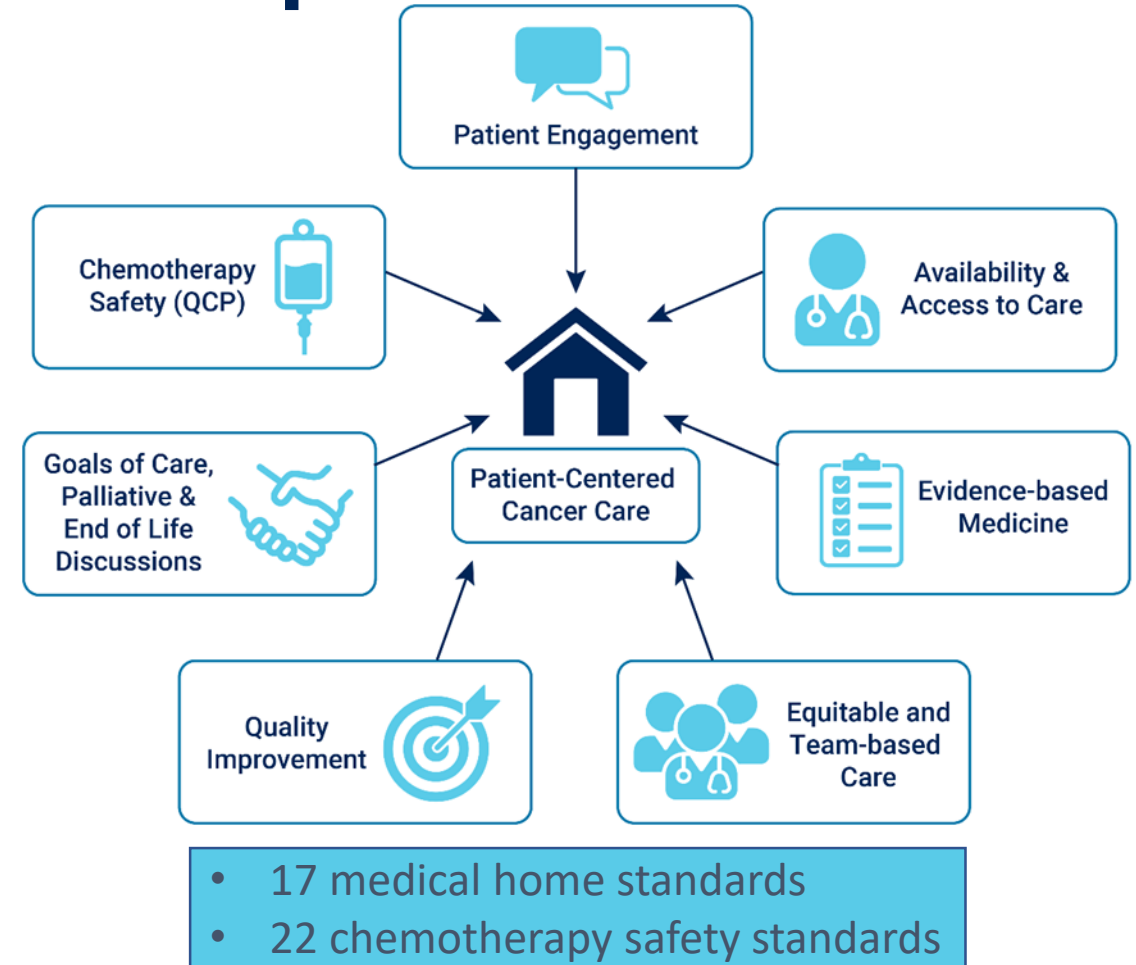
- **Clinical and financial information** for a transparent views of quality and value in cancer care.

Oncology Medical Home (OMH) Standards Development

The **ASCO-COA OMH standards** were developed based on:

- consensus of a **multidisciplinary Expert Panel**:
 - clinicians
 - health system administrators
 - patient advocates.
- a **systematic review** of evidence including
 - **comparative** peer-reviewed studies
 - studies of **clinical pathways**
 - systematic review of **survivorship care plans**

Standards approved by COA's Payment Reform Committee and the ASCO Board of Directors.



Published in JCO-OP August 2021

ASCO[®]

AMERICAN SOCIETY OF CLINICAL ONCOLOGY
ASSOCIATION FOR CLINICAL ONCOLOGY
KNOWLEDGE CONQUERS CANCER



ASCO PATIENT CENTERED CANCER CARE CERTIFICATION FEATURING ASCO AND COA ONCOLOGY MEDICAL HOME

Success in Value-Based care

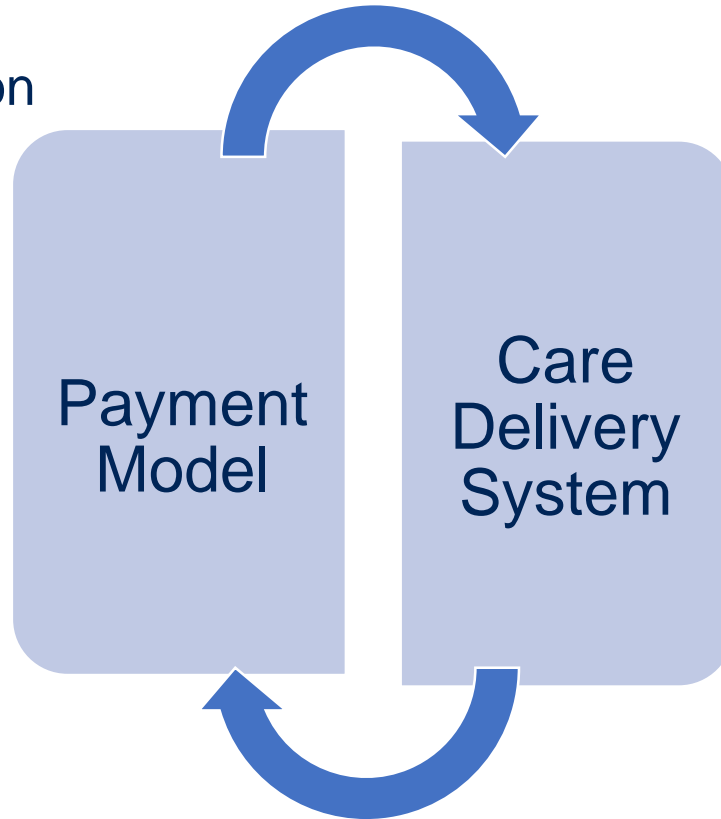
Innovations in alternative payment models need **complimentary innovations in care delivery** in order to achieve meaningful savings and improve quality

Center Medicare & Medicaid Innovation

- Oncology Care Model
- Enhancing Oncology Model

Commercial Payers

- Aetna
- Elevance Health
- Cigna
- Humana
- Multiple Blues



**Patient-Centered Cancer Care
Certification**
featuring ASCO and COA Oncology
Medical Home

ASCO Patient-Centered Cancer Care Certification Pilot (APC4)

- **Certification Standards** adopted from Oncology Medical Home Standards and certification manual created
- July 2021 to June 2023 (recruitment, certification, evaluation)
- 12 practices and 2 commercial payers engaged
- Policy review, **on-site survey**, and compliance documentation
- Electronic Health Record and claims-based measures during and after certification process
 - ASCO Quality Reporting Registry (AQRR)
- **Certification awards began July 2022**
- Ongoing Assessment and Improvement Activities beginning August 2022

ASCO Patient Centered Cancer Care Certification

- Patient Engagement
- Shared Decision Making
- Education
- Timeline Access to Care

- Advance Care Planning
- Psychosocial Support
- Assessing Pain
- Appropriate Care at the End of Life
- **Health Equity**

Patient Feedback

Evidence Based Medicine

Balanced Measurement Scorecard

Quality Cancer Care

Utilization & Cost

- Use of Evidence and Value-Based Clinical Pathways
- Reducing Variations in Care
- Continuous Improvement

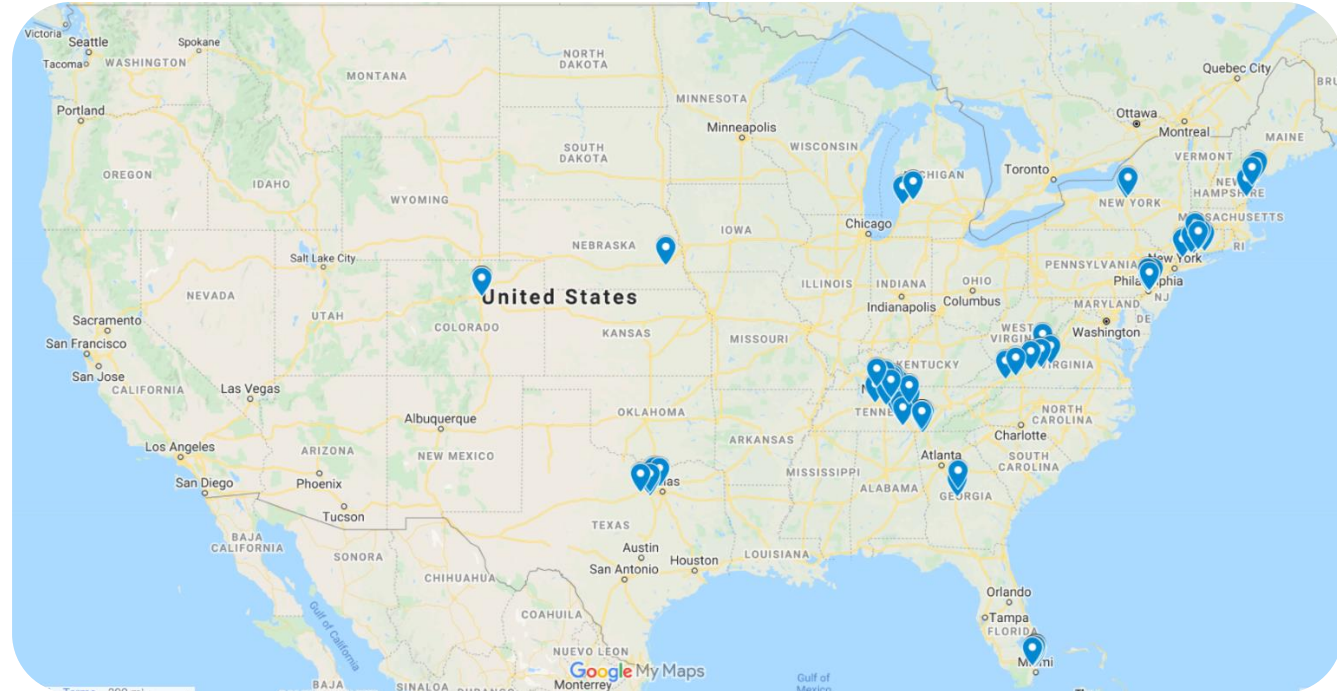
- Hospital Admissions
- Emergency Department Visits
- Hospice Utilization

Timeline:



APC4 Pilot Participants

- **Blue Ridge Cancer Care***
Roanoke, VA
- **Cancer & Hematology Centers of Western Michigan****
Grand Rapids, MI
- **Central Georgia Cancer Care**
Macon, GA
- **Hematology Oncology Associates of Central NY**
East Syracuse, NY
- **Memorial Cancer Institute**
Hollywood, FL
- **Nebraska Hematology-Oncology, P.C.**
Lincoln, NE
- **New England Cancer Specialists*****
Scarborough, ME
- **Sidnev Kimmel Cancer Center - Jefferson Health**
Philadelphia, PA
- **Tennessee Oncology****
Nashville, TN
- **The Center for Cancer and Blood Disorders****
Fort Worth, TX
- **University of Colorado Cancer Center**
Aurora, CO
- **Yale New Haven Health – Smilow Cancer Hospital**
New Haven, CT



12 practices, 88 sites of service, 482 oncologists
10 Certified Summer 2022
Additional 2 for certification 2023

- * US Oncology Network
- ** Partner of OneOncology
- *** Dana Farber Cancer Institute affiliate

Pilot Evidence of Practice Transformation

Practices Implementing APC4 Standards for the First Time

- Advance Care Planning
- Goals of Care Discussion
- Health Equity*
- Patient Experience Survey
- ED/Hospitalization Avoidance
- Oncology Treatment Pathways
- Triage Pathway Process
- Chemotherapy Safety Standards
- Financial Counselor
- Survivorship Care Program

APC4 is a learning collaborative offering monthly calls to share learnings, plus a one-day Quality Training Program session for participants

All Pilot practice types and sizes are capable of meeting the standards

* Two practices added a dedicated EDI coordinators and one practice added a Medical Director for Health Equity and Community Engagement

Oncology Medical Home Benefits

Nurturing Trust and Engagement

Appropriate and Efficient Care

Team Oriented Care

Safety

Continuous Quality Improvement

End of Life Planning and Care

ASCO Patient-Centered Cancer Care Certification (APC4) Pilot to Program

- APC4 has been approved as a national program
- Program launch July 2023
- Formal announcement at upcoming ASCO Annual Meeting







SIDNEY KIMMEL CANCER CENTER | NCI-DESIGNATED

Greater Philadelphia Business Coalition on Health

Andrew E. Chapman DO, FACP
Director, Sidney Kimmel Cancer Center
Thomas Jefferson University/Jefferson Health
April 4, 2023

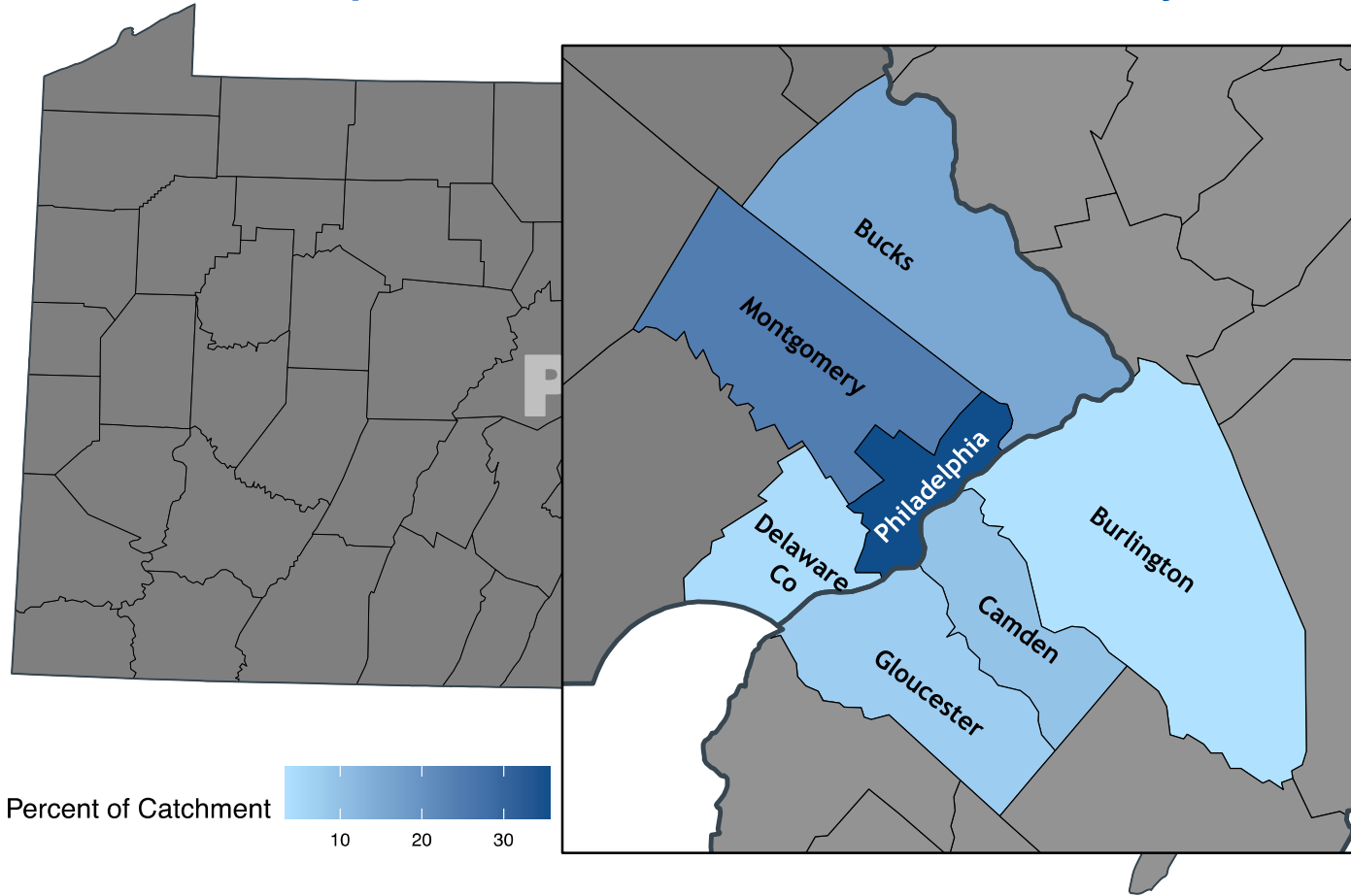
Advanced Care Hubs



-  Jefferson
-  Drexel Consortium Partner
-  Advanced Care Hubs
-  Einstein
Integration in process
-  Jefferson
Expanding services
-  Advanced Care Hub
In development

SKCC Catchment Area

85% of SKCC patients reside in a 7-county catchment area



Catchment Area County	% of total volume
Philadelphia (PA)	30.63%
Montgomery (PA)	21.17%
Bucks (PA)	13.04%
Camden (NJ)	8.16%
Gloucester (NJ)	6.41%
Delaware Co (PA)	3.82%
Burlington (NJ)	2.83%
TOTAL	> 85%

Catchment Area Incidence and Mortality

Incidence and Mortality Rates by Cancer site for the 7 County SKCC Catchment Area

Incidence (Rates per 100,000)					Mortality (Rates per 100,000)				
Specialty	National	State (PA)	State (NJ)	SKCC Catchment	Specialty	National	State (PA)	State (NJ)	SKCC Catchment
All Sites	448.7	484.6	485.9	504.7	All Sites	155.5	163.4	148.4	167.5
Bladder	20	23.9	23.1	23.5	Bladder	4.3	4.7	4.6	4.8
Brain	6.5	7.2	6.8	7.0	Brain	4.4	4.5	4.2	4.5
Breast	125.9	132.2	136.6	137.3	Breast	20.1	21.0	20.9	22.7
Cervix	7.6	7.3	7.7	7.7	Cervix	2.2	2.1	2.1	2.2
Colorectal	38.4	41.1	40.8	41.9	Colorectal	13.7	14.5	13.7	14.9
Leukemia	14.2	15	15.7	13.4	Leukemia	6.3	6.5	6.0	6.1
Liver	8.4	8.5	7.8	10.5	Liver	6.6	6.4	5.9	7.5
Lung	58.3	63.5	55.3	66.7	Lung	38.5	40.8	33.7	41.4
Myeloma	6.6	6.9	7.6	6.6	Myeloma	3	3.2	3	3.1
Non-Hodgkin Lymphoma	19.3	21	21.8	21.2	Non-Hodgkin Lymphoma	5.4	5.9	5.3	5.5
Cut. Melanoma	22.3	24.3	22.2	25.6	Cut. Melanoma	2.6	2.7	2.5	2.6
Oral cavity & Pharynx	11.8	12.1	11.1	11.3	Oral cavity & Pharynx	2.5	2.4	2.0	2.3
Pancreas	12.9	14.30	14.4	14.8	Pancreas	11	12.1	11.3	12.4
Prostate	104.5	103.7	131.3	130.1	Prostate	19.0	18.6	17.6	21.9
Renal	16.8	17.8	16.3	19.2	Renal	3.6	3.5	3.1	3.3
Thyroid	14.3	19.6	19.3	19.3	Thyroid	0.5	0.5	0.5	0.5

Source: State Cancer Profiles, 2013-2017, United States Census Bureau, 2010-2020, CDC.gov

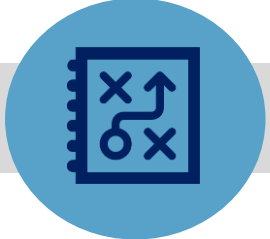
*Includes data on 1. Philadelphia County, PA 2. Delaware county, PA 3. Montgomery County, PA 4. Bucks County, PA 5. Gloucester County, NJ 6. Burlington County, NJ 7. Camden County, NJ

Service Line Care Transformation

ONCOLOGY QUALITY STRATEGY

Quality Improvement

Data-driven approaches to maximizing value



**Pathways
Compliance &
Utilization**



**Chemo in Last
14 Days of Life**



**How Well Staff
Worked
Together**



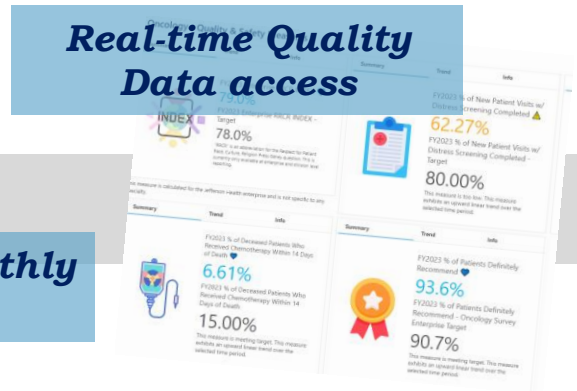
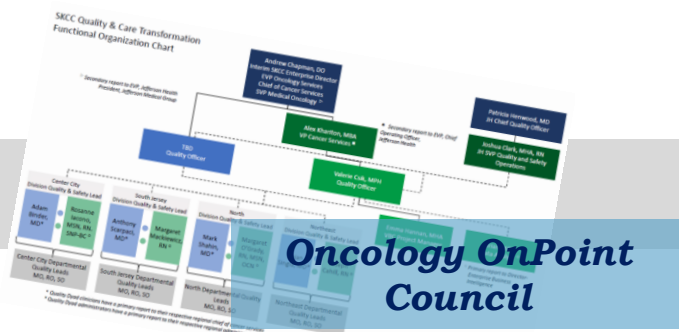
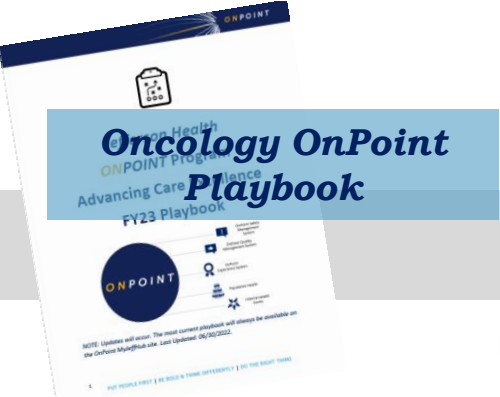
**Distress
Screening at
New Patient
Visit**



**30-Day
Readmission of
Patients Discharged
to Home**

Information Sharing

Actionable insights to meet quality targets



ONCOLOGY & VALUE-BASED CARE

Current state:

Consolidating program requirements to inform internal strategy for maximizing value



2016 - 2022

Oncology Care Model (OCM)

prompted development of additional patient-centered resources



2020 - present

Oncology Medical Home (OMH)

program provides sector of commercial population with oncology navigation services



2021 - present

Patient-Centered Cancer Care (PC4)

aligned enterprise implementation of comprehensive cancer care



2022

Commercial Payor

expresses initial interest in collaborating with SKCC in unique value-based arrangement

2023 -

? *CMMI's Enhancing Oncology Model (EOM)*

presents opportunity to financially gain from efficient, high-quality care delivery

? *Commercial partnership*

SKCC's enterprise-wide, data-driven approach to patient-centered cancer care

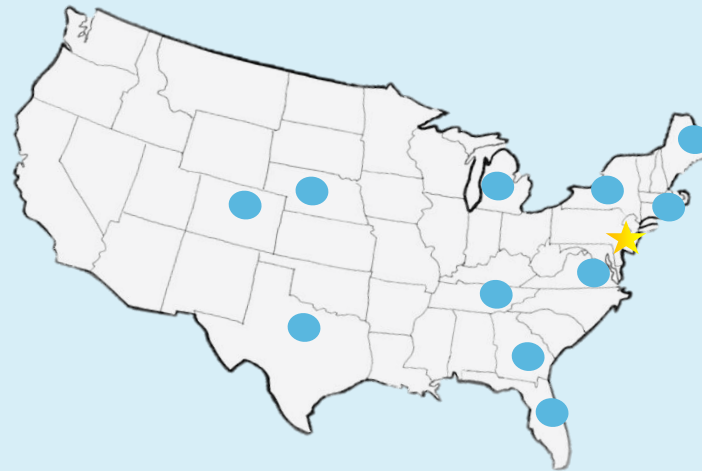
INAUGURAL CERTIFICATION COHORT

12 cancer centers attempted certification in 2021-2022

GEOGRAPHY

12 states

176,000 median city population
(min: 2.9k | max: 1.6m)



PRACTICE TYPE

8 practices participated in OCM

3 practices are in academic health systems

10 practices have achieved QOPI (chemotherapy safety)
certification prior ASCO site visit

*indicates OCM practice | indicates academic health system

CERTIFICATION STANDARDS

Certifying excellence in **care delivery** and **patient safety** in medical oncology:

- Patient education and access to care
- Evidence-based medicine
- Team-based, comprehensive, equitable care
- Continual quality improvement
- Patient-based goal-setting for treatment
- Chemotherapy safety



SKCC is the **FIRST** academic medical center to achieve certification in the nation!

Transition from pilot to program in July 2023:

ASCO PC4 Certification pioneering elevated standard of care of cancer patients

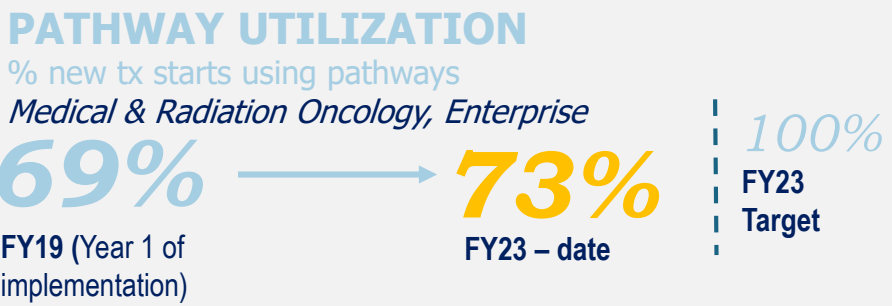
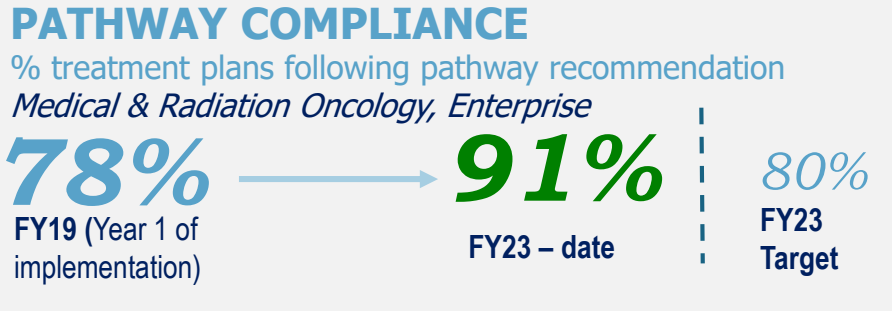
CLINICAL PATHWAYS

Reducing care variation and decreasing costs

Evidence-based care maps guide treatment decisions based on efficacy, toxicity, and cost of cancer drugs

Quality Monitoring

Oncology providers are accountable for pathways use:



Cost impact

Pathways usage reduced spending on drugs:

- Drug costs **decreased an average of -10% over the last 3 years when pathways were used** (On- and Off-Pathway)
- When pathways were followed in making treatment decisions (On-Pathway), the **drug costs were and average of 15% lower** than when pathways were not used (last 3 FYs)
- Annual impact on drug costs when pathways were used amounted to **\$3.54 million in FY22** and an average of \$2.9 million over the last 3 FYs.

Quality + cost outcomes lead to favorable positioning in value-based programs that require clinical pathways



HOME > DEPARTMENTS & SERVICES > SIDNEY KIMMEL CANCER CENTER – JEFFERSON HEALTH > MOBILE CANCER SCREENING

**SIDNEY KIMMEL
CANCER CENTER –
JEFFERSON HEALTH**

- Office Locations
- Diseases & Conditions
- Tests & Treatments
- Programs & Services
- Preparing for Your Visit
- Frequently Asked Questions
- Patient & Family Support
- Sidney Kimmel Cancer Network
- Mobile Cancer Screening**
- Give Now
- Clinical Trials 

Mobile Cancer Screening



The Mobile Cancer Screening Van is the latest in a long line of innovation and technology advancements from the Sidney Kimmel Cancer Center. Thanks to a generous gift from Dietz & Watson, this mobile cancer screening van was designed specifically for Jefferson Health and provides a convenient way to receive a cancer screening with the same imaging technology we use at our facilities.

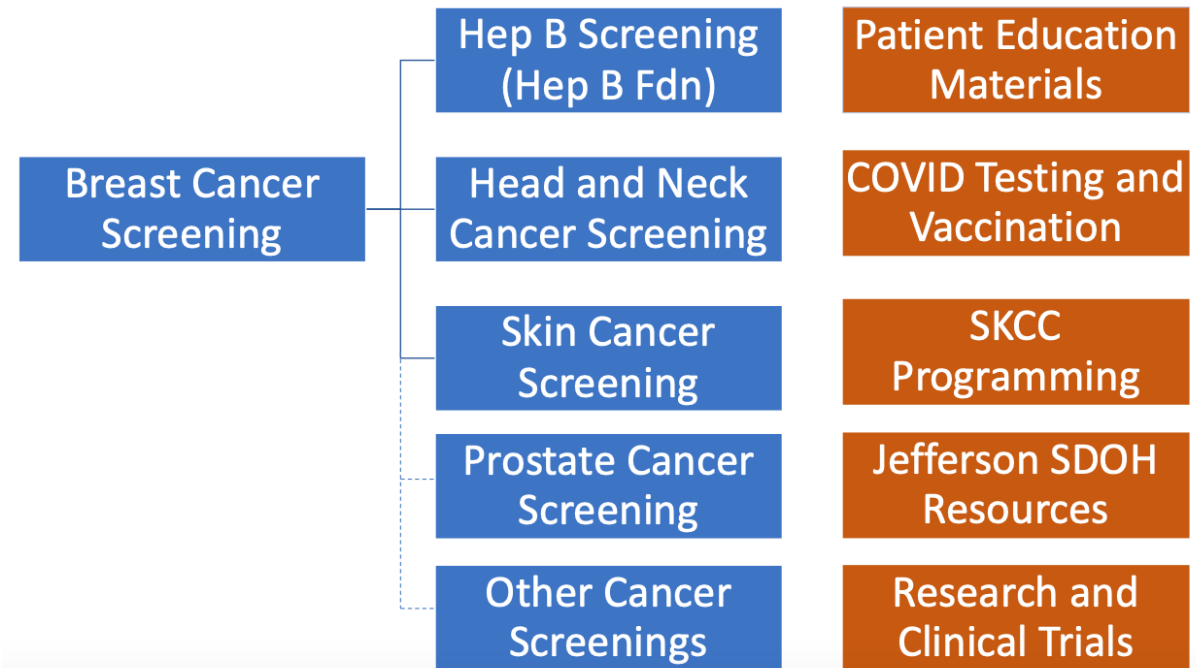
In partnership with:



PREMIUM MEATS | ARTISAN CHEESES

- Private changing rooms and mammogram area
- On average your mammogram takes less than 10 minutes

Services and Resources Offered on the Van:



https://players.brightcove.net/3303963089001/default_default/index.html?videoid=6272678541001

SIDNEY KIMMEL CANCER CENTER | NCI-DESIGNATED



Jefferson
Thomas Jefferson University



Drexel
UNIVERSITY

<https://sidneykimmelcancercenter.jeffersonhealth.org/>

Discussion



ASCO Certification Program Contact Information:
patientcenteredcare@asco.org

ASCO Quality Programs Resource:
practice.asco.org